



Mercer+Mettle® Women's Stretch Jersey Relaxed Scoop MM1017

With a relaxed fit, a flattering neckline and superior softness, this top is all about going with the flow. Back-seaming detail sets it apart from your more casual, everyday tees. The drapey, curved hem makes tucking in completely optional.

Fabric+Weight

- 5-ounce, 92/8 poly/spandex jersey

Features+Benefits

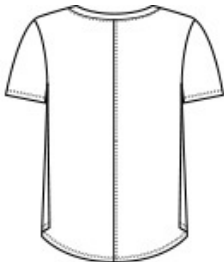
- Moisture-wicking
- Scoop neckline
- Back-seaming detail
- Side seam wraps at curved hem

CARE INSTRUCTIONS

Machine Wash Cold With Like Colors. Do Not Use Fabric Softener. Do Not Bleach. Tumble Dry Low. Remove Promptly. Cool Iron If Necessary.

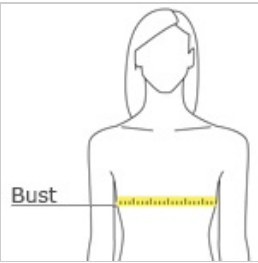


front



back

HOW TO MEASURE



BUST
Measure under the arm and around the fullest part of the bust with arms down, keeping tape horizontal.

SIZE CHART

	XS	S	M	L	XL	2XL	3XL	4XL
Size	2	4/6	8/10	12/14	16/18	20/22	24/26	28/30
Bust	32-34	35-36	37-38	39-41	42-44	45-47	48-51	52-55

COLOR INFORMATION



Anchor Grey
PMS 426C



Deep Black
PMS BLACK C



Insignia Blue
PMS NO MATCH