



Mercer+Mettle® Long Sleeve Stretch Woven Shirt MM2000



With smart tailoring and a modern fit, this shirt will follow your every move, day or night. Topped with rimmed buttons and a back yoke seam, the solid fabric has a subtle, heathered look thanks to its end-on-end weave.

Fabric+Weight

- 3.4-ounce,56/36/8 cotton/poly/spandex end-on-end (Air Blue and Gusty Grey)
- 3.5-ounce,56/36/8 cotton/poly/spandex (solid colors)
- 3.8-ounce,56/36/8 cotton/poly/spandex (White)

Features+Benefits

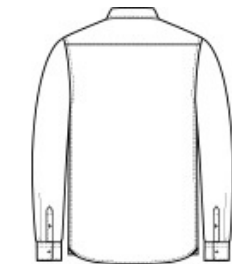
- Easy care
- Open collar
- Includes removeable collar stays
- Rimmed, satin-finished buttons
- Back yoke
- Gusset detail

CARE INSTRUCTIONS

Machine Wash Cold With Like Colors. Only Non-Chlorine Bleach If Needed. Tumble Dry Low. Cool Iron If Needed.

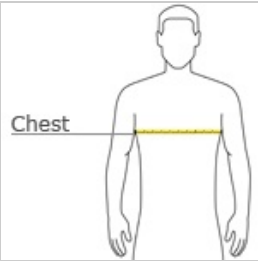


front



back

HOW TO MEASURE



CHEST WIDTH
Measure under the arm and around the fullest part of the chest with arms down, keeping tape horizontal.

SIZE CHART

	XS	S	M	L	XL	2XL	3XL	4XL
Chest	32-34	35-37	38-40	41-43	44-47	48-51	52-56	57-61

COLOR INFORMATION



Air Blue End On End
PMS 651C



Anchor Grey
PMS 426C



Deep Black
PMS BLACK C



Gusty Grey End On End
PMS COOL GREY 8C



Night Navy
PMS 532C



Townsend Green
PMS NO MATCH



White