



# Mercer+Mettle® Women's Faille Soft Shell MM7101



For rain-repelling and work-life blending, this shell has a refined, easy-moving shape and technical DWR-finished fabric. Reverse coil zip pockets keep essentials dry, safe and in place while the black, oxidized molded zipper extends through the collar.

### Fabric+Weight

- 77/23 nylon/spandex bonded to a water-resistant film insert and 100% polyester jersey lining
- 5K/5K waterproof breathable fabric

### Features+Benefits

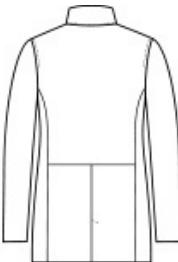
- Durable water-repellent (DWR) finish
- Black oxidized molded 2-way zipper
- Hidden reverse coil zip pockets
- Slightly longer length
- Vent at center back hem

### CARE INSTRUCTIONS

Machine Wash Cold, Gentle Cycle. Tumble Dry Low. Cool Iron If Needed. Do Not Bleach. Do Not Dry Clean.

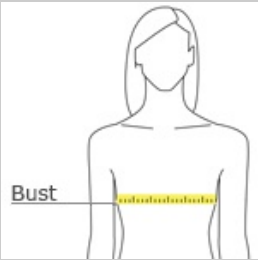


front



back

### HOW TO MEASURE



**BUST**  
Measure under the arm and around the fullest part of the bust with arms down, keeping tape horizontal.

### SIZE CHART

	XS	S	M	L	XL	2XL	3XL	4XL
Size	2	4/6	8/10	12/14	16/18	20/22	24/26	28/30
Bust	32-34	35-36	37-38	39-41	42-44	45-47	48-51	52-55

### COLOR INFORMATION

Please note: PMS code information is shown only when an exact match is available.



Anchor Grey  
PMS 426C



Deep Black  
PMS Black C