



# DISCONTINUED Nike Dri-FIT Chest Stripe Polo. NKAA1855



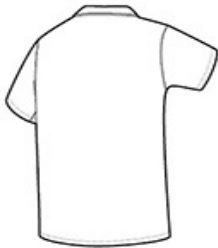
With contrasting printed stripes, this lightweight polo offers exceptional comfort thanks to Dri-FIT moisture management technology and underarm gussets. Design details include a self-fabric collar, two-button placket with dyed-to-match buttons and open hem sleeves. A contrast heat transfer swoosh design trademark is on the left sleeve. Made of 4.3-ounce, 100% polyester Dri-FIT fabric.

CARE INSTRUCTIONS

Machine wash cold (30c) wash inside out; wash with like colors, do not use softeners, do not use bleach, tumble dry low, do not iron, do not dry clean.

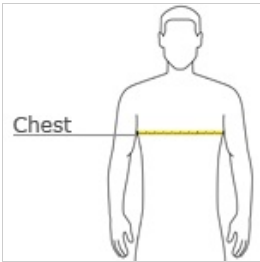


front



back

HOW TO MEASURE



CHEST WIDTH  
Measure under the arm and around the fullest part of the chest with arms down, keeping tape horizontal.

SIZE CHART

	XS	S	M	L	XL	2XL	3XL	4XL
Chest	32-35	35 - 37 1/2	37 1/2 -41	41-44	44-48 1/2	48 1/2 - 53 1/2	53 1/2 - 58	58-63

COLOR INFORMATION

Please note: PMS code information is shown only when an exact match is available.