

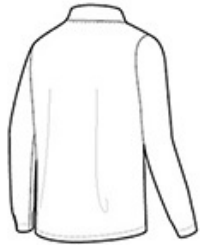


Nike Therma-FIT Full-Zip Fleece. NKAH6418

Designed to help keep you warm during cold-weather workouts, this breathable Nike Therma-FIT style manages moisture to perform. It's designed with a zip-through collar, reverse coil zippers, front zippered pockets and open cuffs. The contrast heat transfer Swoosh design trademark is on the left sleeve. Made of 7-ounce, 100% polyester Therma-FIT fabric.

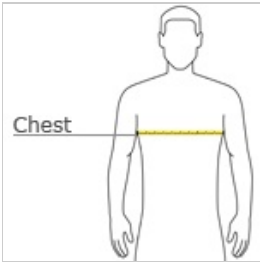


front



back

HOW TO MEASURE



CHEST WIDTH

Measure under the arm and around the fullest part of the chest with arms down, keeping tape horizontal.

SIZE CHART

	2XL	3XL	4XL	XS	S	M	L	XL
Chest	48 1/2 - 53 1/2	53 1/2 - 58	58-63	32-35	35-37 1/2	37 1/2 -41	41 - 44	44-48 1/2

COLOR INFORMATION

Please note: PMS code information is shown only when an exact match is available.