



Nike Victory Solid Polo NKDX6684



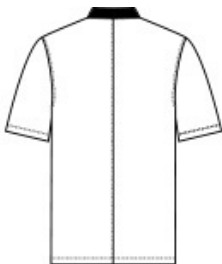
Built from 100% recycled polyester fabric, Nike scores a victory for sustainability and performance in these sophisticated polos engineered with Dri-FIT moisture management technology. Details include a flat knit collar, two-button placket with dyed-to-match buttons with 60% recycled content, open hem sleeves and an open hem. A contrast heat transfer Swoosh logo is on the left sleeve. Made of 4-ounce, 100% recycled polyester fabric.

CARE INSTRUCTIONS

Machine Wash Cold. Wash With Like Colors. Do Not Use Softeners. Remove Immediately. Do Not Allow To Lay On Itself When Wet. Do Not Bleach. Tumble Dry Low. Cool Iron. Do Not Dry Clean.

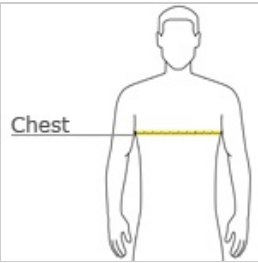


front



back

HOW TO MEASURE



CHEST WIDTH
Measure under the arm and around the fullest part of the chest with arms down, keeping tape horizontal.

SIZE CHART

	XS	S	M	L	XL	2XL	3XL	4XL
Chest	32-35	35-37 1/2	37 1/2-41	41-44	44-48 1/2	48 1/2 -53 1/2	53 1/2 - 58	58-63

COLOR INFORMATION

Please note: PMS code information is shown only when an exact match is available.



Black
PMS BLACK C



College Navy
PMS 533C



Cool Grey
PMS 424C



Light Photo Blue
PMS 7690C



University Red
PMS 200C