



OGIO® Commuter Woven Shirt. OG1002



Developed for the modern commuter, this shirt has the stretch, style and functionality needed for work, travel and every stop in-between.

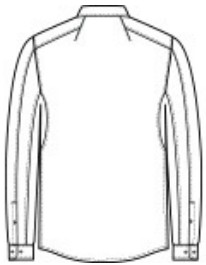
- 3.8-ounce, 56/38/6 cotton/poly/spandex
- Open collar
- Mitered woven label
- Angled shoulder yoke with back seaming
- Pleated sleeves with underarm panels
- Button-through sleeve plackets
- Two-button adjustable cuffs
- Woven OGIO badge at front hem
- Shirttail hem can be worn untucked

CARE INSTRUCTIONS

Machine wash cold with like colors, only non-chlorine bleach if needed. Tumble dry low, warm iron if needed.



front



back

HOW TO MEASURE



CHEST WIDTH

Measure under the arm and around the fullest part of the chest with arms down, keeping tape horizontal.

SIZE CHART

	XS	S	M	L	XL	2XL	3XL	4XL
Chest	32-34	35-37	38-40	41-43	44-46	47-49	50-53	54-57

COLOR INFORMATION

Please note: PMS code information is shown only when an exact match is available.



Blacktop
PMS BLACK C



Gear Grey Heather
PMS COOL GREY
10C



Metal Blue Heather
PMS 644C



White