



OGIO® Extend Long Sleeve Button-Up OG161



Extend your casual wardrobe with this OGIO knit shirt that has mechanical stretch. The heathered fabric has a subtle pinstripe effect that's evident in the inside collar, locker loop and at the side seam gussets.

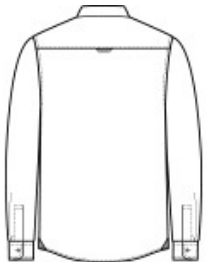
- 4-ounce, 65/35 poly/cotton knit
- OGIO heat transfer label for tag-free comfort
- Open collar
- Sandwiched tonal buttons
- Left chest pocket with woven OGIO tab
- Back locker loop
- Cuffed sleeves
- Slightly curved hem
- Shirttail hem can be worn untucked

CARE INSTRUCTIONS

Machine Wash Cold With Like Colors. Do Not Use Fabric Softener. Do Not Bleach. Tumble Dry Low. Remove Promptly. Cool Iron If Necessary.



front



back

HOW TO MEASURE



CHEST WIDTH
Measure under the arm and around the fullest part of the chest with arms down, keeping tape horizontal.

SIZE CHART

	XS	S	M	L	XL	2XL	3XL	4XL
Chest	32-34	35-37	38-40	41-43	44-46	47-49	50-53	54-57

COLOR INFORMATION

Please note: PMS code information is shown only when an exact match is available.



Blacktop
PMS BLACK C



Blacktop Heather
PMS BLACK C



Deep Blue Heather