



OGIO® Luuma Hoodie OG814



This ultraversatile, ultracomfortable hoodie easily transitions from the gym to the office with OGIO-only style.

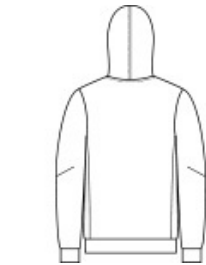
- 7.1-ounce, 57/38/5 modal/poly/spandex fleece
- OGIO heat transfer label for tag-free comfort
- 2-panel, jersey-lined hood
- Seaming details at sleeves
- Side panel details
- Hidden side entry pockets
- Open hem
- Reflective O heat transfer on front left hem

CARE INSTRUCTIONS

Machine Wash Cold With Like Colors. Do Not Use Fabric Softener. Only Non-Chlorine Bleach When Needed. Tumble Dry Low. Remove Promptly. Cool Iron If Necessary.



front



back

HOW TO MEASURE



CHEST WIDTH
Measure under the arm and around the fullest part of the chest with arms down, keeping tape horizontal.

SIZE CHART

	XS	S	M	L	XL	2XL	3XL	4XL
Chest	32-34	35-37	38-40	41-43	44-46	47-49	50-53	54-57

COLOR INFORMATION

Please note: PMS code information is shown only when an exact match is available.



Blacktop
PMS BLACK C



Petrol Grey
Heather
PMS COOL GREY
10C



River Blue Navy
PMS 533C