



# OGIO® Luuma Flex Hooded Henley OG826



Cozy but refined, this OGIO look is elevated enough for the office but also perfect for travel.

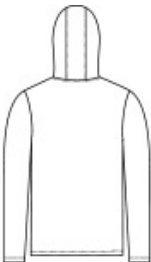
- 7.1-ounce, 57/38/5 modal/poly/spandex French terry
- OGIO heat transfer label for tag-free comfort
- 3-panel hood
- Angled, forward side seams
- 3-snap placket with matte black molded snaps with debossed O
- Silver reflective O heat transfer on left sleeve

### CARE INSTRUCTIONS

Machine Wash Cold With Like Colors. Do Not Use Fabric Softener. Do Not Bleach. Tumble Dry Low. Remove Promptly. Cool Iron If Necessary.



front



back

### HOW TO MEASURE



**CHEST WIDTH**  
Measure under the arm and around the fullest part of the chest with arms down, keeping tape horizontal.

### SIZE CHART

	XS	S	M	L	XL	2XL	3XL	4XL
Chest	32-34	35-37	38-40	41-43	44-46	47-49	50-53	54-57

### COLOR INFORMATION

Please note: PMS code information is shown only when an exact match is available.



Blacktop  
PMS BLACK C



Deep Olive



Petrol Grey  
Heather  
PMS COOL GREY  
10C