

Port & CoTM Performance Sleeveless Tee
PC380SL

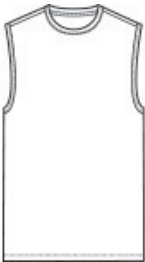


Rated UPF50 to help combat harmful UV rays, this tee also performs with Dry Zone[®] moisture-wicking technology to keep you cool, dry and comfortable.

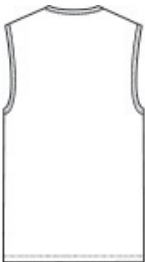
- 3.8-ounce, 100% polyester
- Removable tag for comfort and relabeling
- UPF rating of 50
- Self-fabric trim at neckline
- Self-fabric binding at armholes

CARE INSTRUCTIONS

Machine Wash Cold, Inside Out With Like Colors. Do Not Use Fabric Softener. Only Non-Chlorine Bleach When Needed. Tumble Dry Low . Do Not Iron.



front



back

HOW TO MEASURE



CHEST WIDTH
Measure under the arm and around the fullest part of the chest with arms down, keeping tape horizontal.

SIZE CHART

	S	M	L	XL	2XL	3XL	4XL
Chest	35-37	38-40	41-43	44-46	47-49	50-53	54-57

COLOR INFORMATION

Please note: PMS code information is shown only when an exact match is available.



Charcoal
PMS 4294C



Jet Black
PMS BLACK C



Red
PMS 200C



Silver



True Navy
PMS 533C



True Royal
PMS 7687C



White