

Port & Company® Fleece Pullover Hooded
Sweatshirt PC79H



- 8-ounce, 55/45 ring spun cotton/poly CVC blend fleece
- Self-lined hood
- Dyed-to-match draw cords with aluminum grommets
- Side seamed
- 1x1 rib knit cuffs and hem
- Removable tag for comfort and relabeling

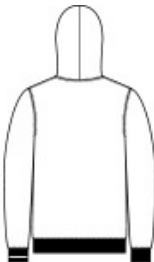
**

CARE INSTRUCTIONS

Machine Wash Warm Inside Out, With Like Colors. Only Non-Chlorine Bleach. Tumble Dry Low. Medium Iron. Do Not Iron Decoration. Do Not Dry Clean.



front



back

HOW TO MEASURE



CHEST WIDTH
Measure under the arm and around the fullest part of the chest with arms down, keeping tape horizontal.

SIZE CHART

	S	M	L	XL	2XL
Chest	35-37	38-40	41-43	44-46	47-49

COLOR INFORMATION

Please note: PMS code information is shown only when an exact match is available.