



# Red Kap® Industrial Work Short. PT26

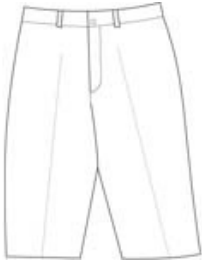


All the IL50 strength of our work pant made for on-the-job wear and warmer weather. Tested through 50 industrial launderer washes.

- 7.25-ounce, 65/35 poly/cotton twill with Touchtex PRO technology for superior color retention and stain release
- Jean-style waistband with button closure
- Two front and back pockets
- 10-inch inseam

### CARE INSTRUCTIONS

Machine wash, tumble dry. Meets IL50 specifications.

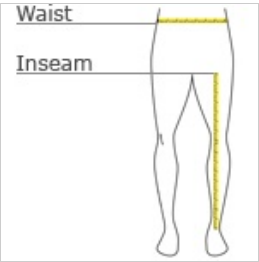


front



back

### HOW TO MEASURE



**WAIST**  
Measure around the smallest part of the natural waist.

**INSEAM**  
Measure a similar style pant that fits well and is the desired length. Measure from the crotch seam to the hem.

### COLOR INFORMATION

Please note: PMS code information is shown only when an exact match is available.