

DISCONTINUED Red House® Ladies Nailhead
Non-Iron Shirt. RH470



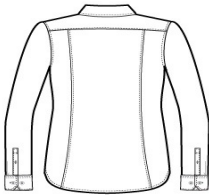
Thoroughly updated, this crisp nailhead shirt has a silky feel and a wrinkle-resistant finish for exceptional non-iron performance. 4-ounce, 60/40 cotton/polyester with pucker-free taped seams and RH engraved buttons to elevate the office-ready look. Open collar and neckline, bust darts and back seaming. Mitered adjustable cuffs.

CARE INSTRUCTIONS

Machine wash cold with like colors, only non-chlorine bleach when needed, tumble dry low, warm iron if needed.



front



back

HOW TO MEASURE



BUST
Measure under the arm and around the fullest part of the bust with arms down, keeping tape horizontal.

SIZE CHART

	XS	S	M	L	XL	3XL	XXL	4XL
Size	2	4/6	8/10	12/14	16/18	24/26	20/22	28/30
Bust	32-34	35-36	37-38	39-41	42-44	48-51	45-47	52-55

COLOR INFORMATION

Please note: PMS code information is shown only when an exact match is available.