



Rabbit Skins™ Infant Football Fine Jersey Bodysuit. RS4437



Now the youngest fan is ready to cheer on the team. Designed with contrasting sleeve stripes and coverstitched yoke, this bodysuit has a sporty look and exceptional comfort.

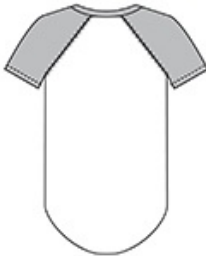
- 4.5-ounce, 100% combed ring spun cotton fine jersey
- 60/40 combed ring spun cotton/poly vintage heathered fine jersey (vintage colors)
- Side seamed
- Ribbed collar
- EasyTear™ label for additional comfort and ability to brand as your own
- Back neck and shoulder-to-shoulder taping
- Coverstitched front and back yoke
- Contrasting stripes on sleeves
- Double-needle sleeves
- Double-needle ribbed binding on leg openings
- Innovative three-snap closure

CARE INSTRUCTIONS

Machine wash cold. Only non-chlorine bleach. Tumble dry low. Do not iron on decoration. Do not dry clean. Not intended for sleepwear.



front



back

SIZE CHART

| | 06M | 12M | 18M | 24M |
|---------------------|--------|--------|--------|--------|
| Chest Width | 9 | 10 | 11 | 12 |
| Body Length at Back | 12 1/2 | 13 1/2 | 14 1/2 | 15 1/2 |
| Sleeve Length | 3 | 3 1/4 | 3 1/2 | 3 3/4 |

COLOR INFORMATION

Please note: PMS code information is shown only when an exact match is available.



Black/ White
PMS BLACK 6 C



Vintage Hot Pink/
Blended White
PMS 1915 C



Vintage Red/
Blended White
PMS 200 C



Vintage Royal/
Blended White
PMS 7455 C



Vintage Smoke/
Blended White
PMS 426 C