

SPORT-TEK®

Sport-Tek® Long Sleeve Digi Camo Tee. ST460LS

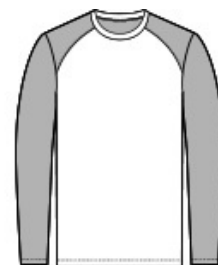


A subtle digi camo pattern gives this moisture-wicking, breathable performance tee a unique edge.

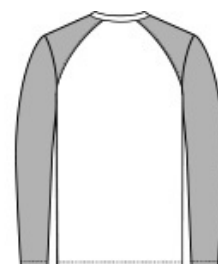
- 3.8-ounce, 100% polyester interlock with sublimated digi camo print
- Removable tag for comfort and relabeling
- Digi camo print on sleeves

CARE INSTRUCTIONS

Machine wash cold with like colors. Do not use fabric softener. Do not bleach. Tumble dry low. Remove promptly. Cool iron if needed. Do not dry clean.



front



back

HOW TO MEASURE



CHEST WIDTH

Measure under the arm and around the fullest part of the chest with arms down, keeping tape horizontal.

SIZE CHART

	XS	S	M	L	XL	2XL	3XL	4XL
Chest	32-34	35-37	38-40	41-43	44-46	47-49	50-53	54-57

COLOR INFORMATION

Please note: PMS code information is shown only when an exact match is available.



Black
PMS BLACK C



Grey Concrete
PMS COOL GRAY
10C



Olive Drab Green
PMS 7771C



True Navy
PMS 533C



True Red
PMS 200C



True Royal
PMS 7687C



White