

**SPORT-TEK®**

# Sport-Tek® PosiCharge® Competitor™ Polo. ST550



Our #1 performance tee fabric is offered in a color-locking, moisture-wicking polo to expand your uniforming options.

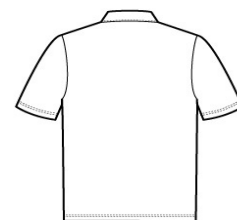
- 3.8-ounce, 100% polyester interlock with PosiCharge technology
- Flat knit collar
- Removable tag for comfort and relabeling
- Taped neck
- 3-button placket with dyed-to-match buttons
- Set-in, open hem sleeves

## CARE INSTRUCTIONS

Machine wash cold with like colors. Only non-chlorine bleach. When needed tumble dry low, remove promptly. Cool iron if needed. Do not use softener. Do not dry clean.



front



back

## HOW TO MEASURE



### CHEST WIDTH

Measure under the arm and around the fullest part of the chest with arms down, keeping tape horizontal.

## SIZE CHART

	XS	S	M	L	XL	2XL	3XL	4XL
Chest	32-34	35-37	38-40	41-43	44-46	47-49	50-53	54-57

## COLOR INFORMATION

Please note: PMS code information is shown only when an exact match is available.



Atomic Blue  
PMS 2203C



Black  
PMS BLACK C



Carolina Blue  
PMS 646C



Deep Orange  
PMS 173C



Deep Red  
PMS 201C



Forest Green  
PMS 553C



Gold  
PMS 1235C



Iron Grey  
PMS 7540C



Kelly Green  
PMS 341C



Maroon  
PMS 504C



Purple  
PMS 7672C



Silver  
PMS 429C



True Navy  
PMS 533C



True Red  
PMS 200C



True Royal  
PMS 7687C



White