

DISCONTINUED Port Authority® Marled Crew
Sweater. SW417

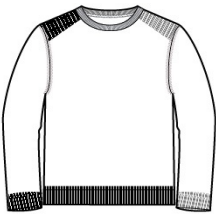


Two-toned marled yarns give this warm sweater a handsome look.

- 60/40 cotton/acrylic
- Fully fashioned seams
- Saddle shoulders with back-to-front rib detail
- 1x1 rib knit neck, cuffs and hem

CARE INSTRUCTIONS

Machine wash cold with like colors, only non-chlorine bleach when needed, tumble dry low, low iron if needed.

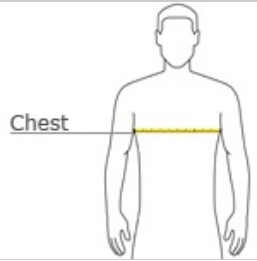


front



back

HOW TO MEASURE



CHEST WIDTH
Measure under the arm and around the fullest part of the chest with arms down, keeping tape horizontal.

SIZE CHART

	XS	S	M	L	XL	2XL	3XL	4XL
Chest	32-34	35-37	38-40	41-43	44-46	47-49	50-53	54-57

COLOR INFORMATION

Please note: PMS code information is shown only when an exact match is available.

