



TravisMathew Tides Up Hooded Jacket TM1MZ336

The ultimate 2-in-1 look. The Tides Up is the total package: we combined our wildly popular Cold Bay Vest (TM1MW453) with a hoodie for one inseparable piece. It is an elevated (yet cool) look that sets you apart.

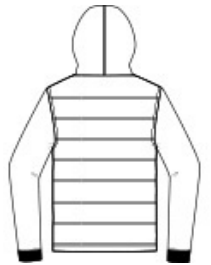
- 90/10 polyester/elastane (vest)
- 4.2-ounce, 55/38/7 acrylic/modal/spandex (hoodie)
- Easy wash and wear
- Enhanced 4-way stretch
- Wrinkle-resistant
- Hood with dyed-to-match draw cords
- Cuffed sleeves
- Side-entry pockets
- TM logo woven patch label at left hem

CARE INSTRUCTIONS

Machine Wash Cold With Like Colors. Gentle Cycle. Do Not Bleach. Tumble Dry Low. Remove Promptly. Cool Iron If Needed. Do Not Dry Clean. Do Not Use Softener.



front



back

HOW TO MEASURE



CHEST WIDTH

Measure under the arm and around the fullest part of the chest with arms down, keeping tape horizontal.

SIZE CHART

	S	M	L	XL	2XL	3XL
Chest	35-37	38-40	42-44	45-47	48-50	52-54

COLOR INFORMATION

Please note: PMS code information is shown only when an exact match is available.



Black/ Black
Heather
PMS COOL GREY
10C



Black/ Grey
Heather
PMS 426C