



TravisMathew Balboa Hooded Full-Zip Jacket TM1MZ338



Take life at ease in this lightweight jacket, whether you're commuting, hanging out or playing eighteen. Designed with that keen TravisMathew eye for layering comfort and quick-dry performance, this lightweight jacket has elevated style and easy movement.

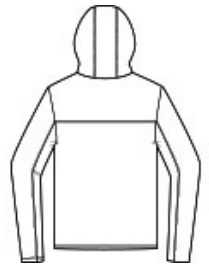
- 4.2-ounce, 90/10 polyester/spandex
- Easy wash and wear
- Three-panel hood with dyed-to-match draw cords
- Zippered side-entry pockets
- TM logo woven patch label at left hem

CARE INSTRUCTIONS

Machine Wash Cold With Like Colors. Gentle Cycle. Tumble Dry Low. Remove Promptly. Cool Iron If Needed.

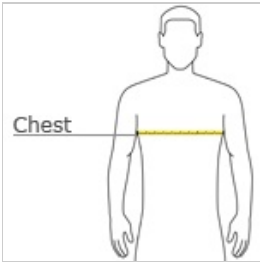


front



back

HOW TO MEASURE



CHEST WIDTH

Measure under the arm and around the fullest part of the chest with arms down, keeping tape horizontal.

SIZE CHART

	S	M	L	XL	2XL	3XL
Chest	35-37	38-40	42-44	45-47	48-50	52-54

COLOR INFORMATION

Please note: PMS code information is shown only when an exact match is available.



Black
PMS 426C



Blue Nights
Heather
PMS 432C



Dark Grey Heather
PMS 425C