



This hefty, true-blue fleece has a grittier, textured hand-plus it's crafted with durability to stand the test of time.

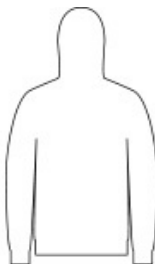
- 13-ounce, 80/20 cotton/poly
- 50/50 cotton/poly (Charcoal Heather)
- Proudly American made
- 1-panel hood with dart for fit
- Metal grommets with draw cords with knotted ends
- Twill neck tape
- Slightly forward shoulders
- Metal zipper
- 1x1 rib knit cuffs and hem
- Front pockets
- Side seamed
- Woven label

CARE INSTRUCTIONS

Machine Wash Cold Inside Out With Like Colors. Use Non-Chlorine Bleach When Needed. Tumble Dry Low. Do Not Iron.

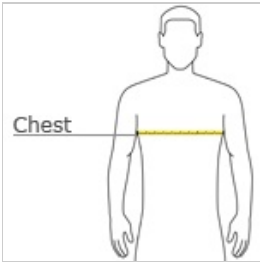


front



back

HOW TO MEASURE



CHEST WIDTH

Measure under the arm and around the fullest part of the chest with arms down, keeping tape horizontal.

SIZE CHART

	S	M	L	XL	2XL	3XL	4XL
Chest	35-37	38-40	41-43	44-46	47-49	50-53	54-57

COLOR INFORMATION

Please note: PMS code information is shown only when an exact match is available.



Charcoal Heather



Deep Black  
PMS BLACK C



Heather Grey