

Port Authority® Slim Fit Carefree Poplin Shirt.  
W103



Lightweight and breathable, our cotton-rich shirts keep their professional edge thanks to a stain-release finish, which releases stains during washing. Budget-friendly and durable, these virtually carefree shirts feature an Easy Care blend and finish. They also color-coordinate with our Core Classic Pique Polos for seamless uniforming.

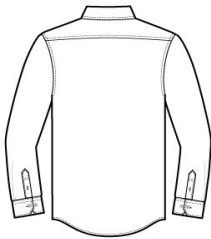
- 3.3-ounce, 55/45 cotton/poly
- For those who prefer a slim (but not tight) fit that sits closer to the body
- Dyed-to-match buttons
- Open collar
- Rounded adjustable cuffs

CARE INSTRUCTIONS

Machine wash cold with like colors, only non-chlorine bleach when needed, tumble dry low, low iron if needed.

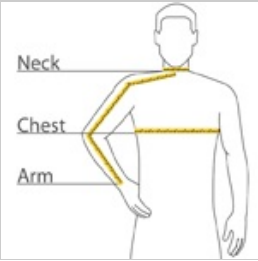


front



back

HOW TO MEASURE



**CHEST WIDTH**  
Measure under the arm and around the fullest part of the chest with arms down, keeping tape horizontal.

**NECK**  
Measure around the fullest part of the neck at the base.

**ARM**  
Place hand on hip. Start at the center of the back of the neck and measure across the shoulder, to the elbow, and then down to the wrist.

SIZE CHART

	XS	S	M	L	XL	2XL
Chest	32-34	35-37	38-40	41-43	44-46	47-49
Neck	16 3/8	16 3/8	16 7/8	17 3/8	18 3/8	19 1/8
Arm	30 1/2	32	34	35	36 1/2	37 1/2

COLOR INFORMATION  
Please note: PMS code information is shown only when an exact match is available.