



# Crescent Valley™ 1/2-Zip Pullover XM6426



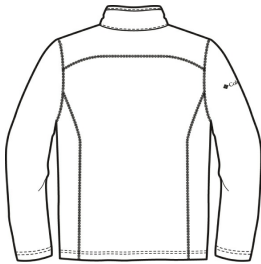
A super lightweight layer for crisp morning hikes or the daily commute. An anti-pill finish and stitching details add modern style. Features open cuffs and an open hem. Contrast Columbia logo embroidered on upper right sleeve. Made of 100% polyester featherweight microfleece.\*\*

**CARE INSTRUCTIONS**

Machine Wash Cold Gentle, With Like Colors, Non-Chlorine Bleach When Needed, Tumble Dry Gentle Low, Remove Promptly, Do Not Iron, Dry-cleanable.

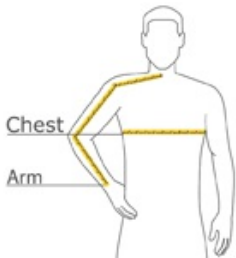


front



back

**HOW TO MEASURE**



**CHEST**  
With arms down at sides, measure around the upper body, under arms and over the fullest part of the chest.

**ARM**  
Place hand on hip. Start at the center of the back of the neck and measure across the shoulder, to the elbow, and then down to the wrist.

**SIZE CHART**

	S	M	L	XL
Chest Size (inches)	35-38	38-41	42-45	46-49
Arm	32 1/2	33 1/2	34 1/2	35 1/2

**COLOR INFORMATION**



Black



Charcoal



Columbia Navy

