



DISCONTINUED Sport-Tek® Youth Ultimate Performance Crew. YST700



A soft cotton hand combines with sweat-wicking, stretchable performance to make training cooler and drier.

- 5-ounce, 95/5 poly/spandex jersey
- Loose athletic fit
- Tag-free transfer label
- Raglan sleeves

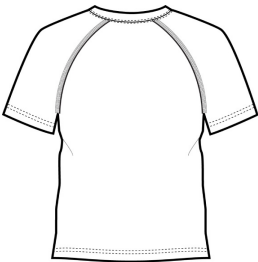
**Due to the nature of polyester performance fabrics, special care must be taken throughout the screen printing process.*

CARE INSTRUCTIONS

MACHINE WASH COLD. WITH LIKE COLORS. NON-CHLORINE BLEACH ONLY IF NEEDED. DO NOT USE FABRIC SOFTNER. TUMBLE DRY LOW, REMOVE PROMPTLY. COOL IRON IF NEEDED. DO NOT DRY CLEAN.

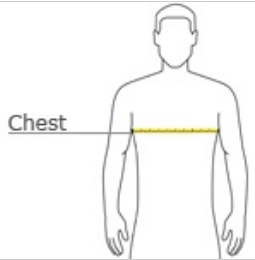


front



back

HOW TO MEASURE



CHEST WIDTH
Measure under the arm and around the fullest part of the chest with arms down, keeping tape horizontal.

SIZE CHART

	XS	XL
Size	4	18/20
Chest	25-26	32-35

COLOR INFORMATION

Please note: PMS code information is shown only when an exact match is available.

