

Port Authority® Classic Tablet Sleeve BG652S



With classic plaid and denim patterns you can transport and protect your tablet in style. A front pocket offers storage for batteries and cords and makes for easy embroidery.

- Plaid: 100% neoprene with 64/35/1 poly/viscose/spandex shell
- Denim: 100% neoprene with 65/35 cotton/poly shell
- Zippered opening
- Dimensions: 8"h x 10.75"w x 1"d

Note: Bags not intended for use by children 12 and under. Includes a California Prop 65 and social responsibility [hangtag](#).

CARE INSTRUCTIONS

Product can be embroidered, silk screened or heat transferred

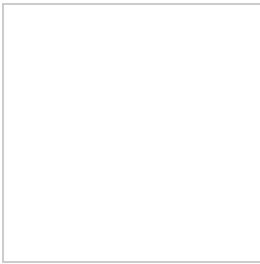


front



back

HOW TO MEASURE



BAGS
Measurements and decoration areas vary by bag.

SIZE CHART

	OSFA
Bags	n/a

COLOR INFORMATION



Black Denim
PMS NTR BLACK CPMS PATTERNED



Black Plaid



Blue Denim
PMS 533 C



Brown Plaid
PMS PATTERNED