



# CornerStone® ANSI 107 Class 2 Mesh Long Sleeve Tee. CS201

This breathable, moisture-wicking mesh tee delivers high visibility and on-the-job comfort.

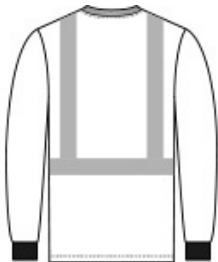
- 4.1-ounce, 100% polyester birdseye mesh
- Durable, reflective 2-inch tape meets ANSI 107 requirements and provides 360-degree visibility on body
- 1x1 rib knit neck
- Back neck tape
- Left chest pocket
- 1x1 rib knit cuffs

### CARE INSTRUCTIONS

Machine wash cold. Do not bleach. Tumble dry low.  
Permanent press. Do not iron. Do not dry clean. Max- 25 washes.



front



back

### HOW TO MEASURE



**CHEST WIDTH**  
Measure under the arm and around the fullest part of the chest with arms down, keeping tape horizontal.

### SIZE CHART

	S	M	L	XL	2XL	3XL	4XL	5XL
Chest	35-37	38-40	41-43	44-46	47-49	50-53	54-57	58-60

### COLOR INFORMATION



Safety Orange  
PMS NO MATCH



Safety Yellow  
PMS NO MATCH