

PORT AUTHORITY

Port Authority® Lightweight Charger Jacket. J329



A wear-anywhere lighter weight jacket at an out-of-this-world price. Built to charge through mild wind and rain, our Lightweight Charger Jacket features a water-resistant shell and warm fleece body lining for year-round versatility.

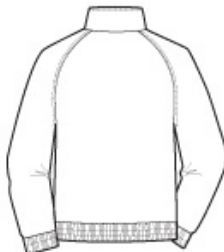
- 100% polyester Taslan shell
- 6.8-ounce, 100% polyester lightweight fleece body lining
- 100% polyester sleeve lining
- Wind-resistant and water-repellent
- Front zippered pockets
- Molded zipper
- Interior pocket
- Port Pocket™ for decoration access
- Elastic cuffs with adjustable self-fabric tabs and hook and loop closures
- Elastic waistband

CARE INSTRUCTIONS

Machine wash cold with like colors, only non-chlorine bleach if needed. Tumble dry low, remove promptly, cool iron if necessary. Do not dry clean.

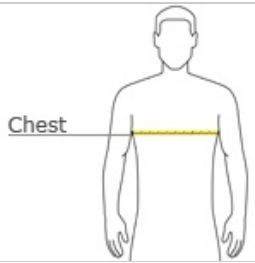


front



back

HOW TO MEASURE



CHEST WIDTH
Measure under the arm and around the fullest part of the chest with arms down, keeping tape horizontal.

SIZE CHART

	XS	S	M	L	XL	2XL	3XL	4XL	5XL	6XL
Chest	32-34	35-37	38-40	41-43	44-46	47-49	50-53	54-57	58-60	61-63

COLOR INFORMATION



True Black
PMS BLACK C



True Navy
PMS 533C