

# Quantum Soft Shell Jacket J725

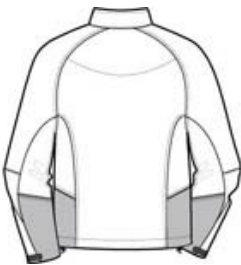


Take on light wind and rain in high-tech style. Our new Quantum Soft Shell is stretchy, breathable and equipped with attention-grabbing extras like colorblocking, welded pockets and reflective trim details. Taped seams give water resistant protection.

- 94/6 poly/spandex
- 8000MM waterproof rating
- 1000G/M<sup>2</sup> breathability rating
- Zip-through cadet collar with zipper garage
- Reverse coil zipper
- Interior pockets
- Raglan sleeves with articulated elbows
- Welded zippered chest pocket
- Front zippered pockets
- Adjustable tab cuffs with hook and loop closures
- Drop tail hem with drawcord and toggles for adjustability



front

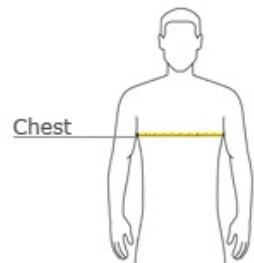


back

### CARE INSTRUCTIONS

**NEW** Port Authority® - Quantum Soft Shell Jacket.  
J725

### HOW TO MEASURE



**CHEST**  
With arms down at sides, measure around the upper body, under arms and over the fullest part of the chest.

### SIZE CHART

	XS	S	M	L	XL	2XL	3XL	4XL
Chest	32-34	35-37	38-40	41-43	44-46	47-49	50-53	54-57

### COLOR INFORMATION



Acid Green/Black



Black/Grey



Engine Red/Black



Moon Blue/Black



Turquoise/Black