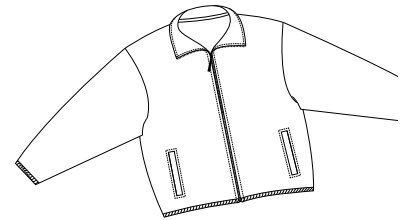
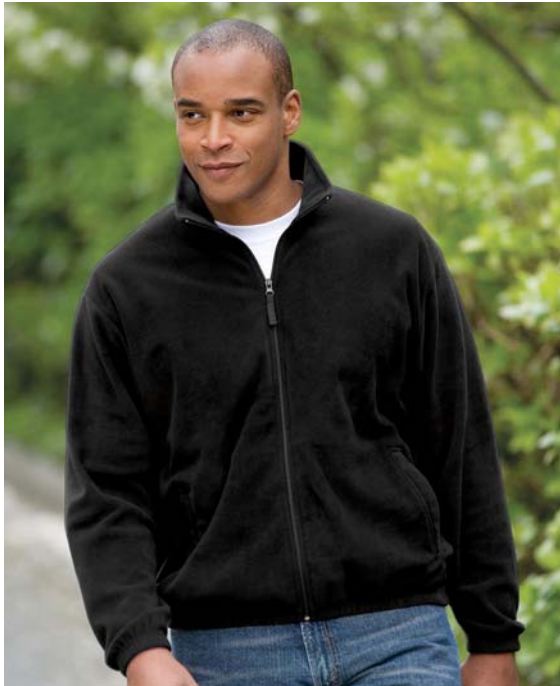
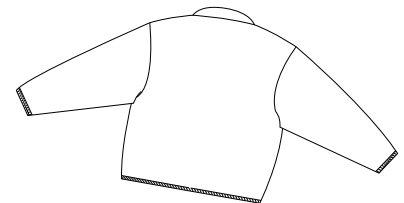


# Value Fleece Jacket

PORT & COMPANY®



Front



Back

JP17

- \* 13.5-ounce, 100% spun polyester \* Twill tape neck seam \* Zipper pull
- \* 2 front slash pockets \* Elastic cuffs and waistband

**Care Instructions:**  
Machine wash warm. Wash inside out with like colors. Line dry. Do not bleach. Do not iron. Do not dry clean.

## Finished Measurements in Inches

Size	XS	S	M	L	XL	2XL	3XL	4XL	5XL	6XL
Chest	22	23.5	25	26.5	28	29.5	31	32.5	34	35.5
Length	25	26	27	28	29	30	31	32	33	34
Sleeve	32	33.5	35	36	37	38	38.5	39	39.5	40
Areas for Decoration		Left/Right Chest, Full Back			Port Pocket™			NA		

Sleeve length measured from center back neck seam to cuff. Chest width measured 1" below arm hole.  
Body length measured from back neck seam to hem.

## Colors

	Black
	Midnight Heather
	Navy

**Please Note:**  
Colors shown are approximate and for reference only. For closest match see PMS colors, or for exact match, returnable samples and grommited samples are available.

## Color Chart

Colors	Black	Midnight Heather	Navy
Textile PMS	19-4007TC	No Match	19-3920TC
General PMS	Process Black	No Match	532C