

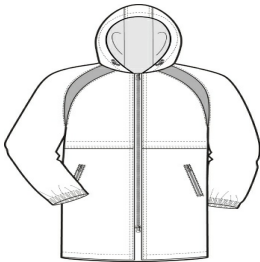


With athletic good looks and weather resistance, our Long Team Parka is perfect for swim teams and other outdoor sports like track, hockey, rugby, and soccer. A longer length and critically sealed seams help this parka keep water out and warmth in.

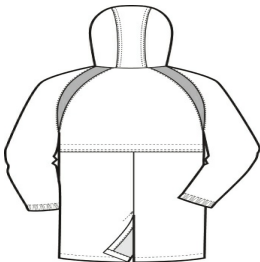
- 100% Teklon® nylon shell
- 100% polyester brushed anti-pill fleece body and hood lining
- 100% polyester sleeve lining with 3-ounce, 100% polyester fill
- 1500MM fabric waterproof rating
- Drawcord hood
- Two-way zipper
- Front zippered pockets
- Interior chest pocket
- Elastic cuffs
- Front and back vents with hook and loop closures for easy embroidery access
- Open hem with back vent for easy movement

CARE INSTRUCTIONS

MACHINE WASH COLD. GENTLE CYCLE, TUMBLE DRY LOW. COOL IRON IF NEEDED. DO NOT DRY CLEAN. DO NOT BLEACH.



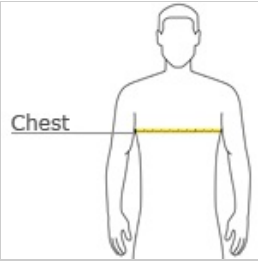
front



back

[Tips For Effectively Screen Printing Polyester Fabrics](#)

HOW TO MEASURE



CHEST  
With arms down at sides, measure around the upper body, under arms and over the fullest part of the chest.

SIZE CHART

	XS	S	M	L	XL	2XL	3XL	4XL
Chest Size (inches)	32-34	35-37	38-40	41-43	44-46	47-49	50-53	54-57

COLOR INFORMATION



Black  
PMS 426 C



True Navy  
PMS 533 C