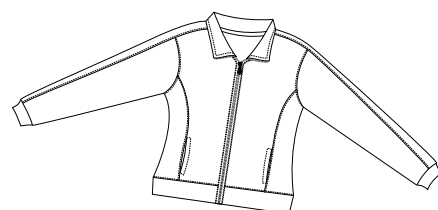
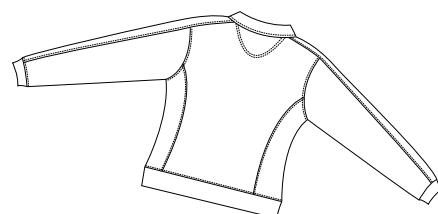


# Ladies Two-Tone Fleece Jacket

**Sport-Tek**  
By Port Authority®



Front



Back

**L259**

- \* 9-ounce \* 60/40 ring spun combed cotton/poly \* Princess cut \* Contoured fit
- \* Rib knit cuffs and waistband \* Fully coverseamed \* Front seam pockets
- \* Antique nickel-finished zipper

## Care Instructions:

Machine wash cold, wash with like colors.  
Do not bleach. Tumble dry low.  
Warm iron if necessary.

## Finished Measurements in Inches

Size	XS	S	M	L	XL	XXL	Plus 1X	Plus 2X
Width	17	18	20	22	23	24	25	27
Length	21	22	23	23.75	24.5	25.25	26	28
Sleeve	31	31.75	32.5	33.25	34	34.75	35.5	37
Stripe	2	2	2	2	2	2	2	2
Pocket	5	5	5	5.5	5.5	6	6	6

Chest width measured 1" below armhole. Body length measured from center back neck to hem. Sleeve length measured from center back seam to hem. Shoulder stripe measured by width. Pocket opening measured top to bottom.

## Colors

	Athletic Heather
	Black
	Light Blue
	Navy
	Pink

## Please Note:

Colors shown are approximate and for reference only. For closest match see PMS colors, or for exact match, returnable samples and grommited samples are available.

## Color Chart

Colors	Athletic Heather	Black	Light Blue	Navy	Pink	White (trim color)
Textile PMS	No Match	19-4203TC	15-3920TC	19-4010TC	13-28052TC	11-0601
General PMS	No Match	Process Black	278C	532C	670C	No Match