

Port Authority® Ladies Hooded Core Soft Shell Jacket. L335



An attached hood and bold colorblocking give this well-priced, wind-resistant, water-repellent soft shell extra rain-shielding protection and strong style.

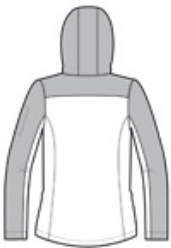
- 100% polyester woven shell bonded to a water-resistant film insert and a 100% polyester microfleece lining
- 1000MM fabric waterproof rating
- 1000G/M2 fabric breathability rating
- Adjustable hood with locking draw cord to customize fit
- Reverse coil zippers
- Interior storm flap with chin guard
- Front zippered pockets
- Zippered left sleeve pocket
- Open hem with locking draw cord

CARE INSTRUCTIONS

Machine wash cold with like colors only. Non-chlorine bleach when needed. Tumble dry low. Cool iron if necessary.



front



back

HOW TO MEASURE



BUST
Measure under the arm and around the fullest part of the bust with arms down, keeping tape horizontal.

SIZE CHART

| | XS | S | M | L | XL | XXL | 3XL | 4XL |
|------|-------|-------|-------|-------|-------|-------|-------|-------|
| Size | 2 | 4/6 | 8/10 | 12/14 | 16/18 | 20/22 | 24/26 | 28/30 |
| Bust | 32-34 | 35-36 | 37-38 | 39-41 | 42-44 | 45-47 | 48-51 | 52-55 |

COLOR INFORMATION



Black
PMS BLACK C



Black/ Battleship
Grey
PMS BLACK C



Dress Blue Navy/
Battleship Grey
PMS 533C