



Designed to meet the needs of active uniforming, our easy care, moisture-wicking, snag-resistant 1/4-zips have the Silk Touch hand you've loved for years, plus PosiCharge<sup>®</sup> technology for exceptional color-locking performance.

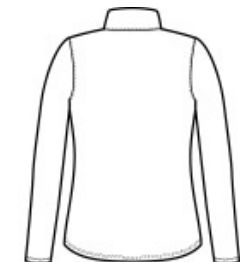
- 4-ounce, 100% polyester double knit with PosiCharge technology
- Cadet collar
- Contrast inner collar
- Tag-free label
- Front seaming
- Sleeve seaming
- Binding at cuffs
- Curved hem

CARE INSTRUCTIONS

Machine wash cold With like colors Do not bleach Do not use fabric softener Tumble dry low Remove promptly Cool iron if needed Do not dry clean



front



back

HOW TO MEASURE



**BUST**  
Measure under the arm and around the fullest part of the bust with arms down, keeping tape horizontal.

SIZE CHART

	XS	S	M	L	XL	XXL	3XL	4XL
Size	2	4/6	8/10	12/14	16/18	20/22	24/26	28/30
Bust	32-34	35-36	37-38	39-41	42-44	45-47	48-51	52-55

COLOR INFORMATION



Black/ Steel Grey  
PMS BLACK C



Navy/ Steel Grey  
PMS 533C



Red/ Black  
PMS 187C



Royal/ Steel Grey  
PMS 3597C



Steel Grey/ Black  
PMS 7540C