



OGIO® Origin Jacket. OE503



COTTON-RICH SOFTNESS

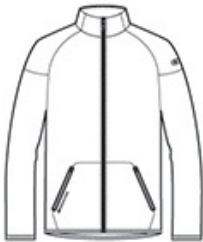
STAY-COOL WICKING

LAYERABLE WARMTH

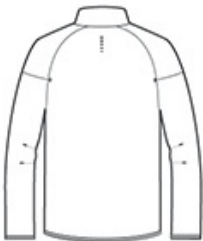
- 8.1-ounce, 64/36 cotton/poly flatback knit
- OGIO heat transfer label for tag-free comfort
- Zip-through collar
- Exposed coil zipper w ith molded cord pull
- Stacked O heat transfers at center back
- Welded front zippered pockets w ith locking pulls
- O heat transfer at right pocket
- Raglan sleeves w ith welded, articulated elbow s
- O heat transfer at upper left sleeve
- OGIO binding at cuffs and hem
- Slight drop tail hem

CARE INSTRUCTIONS

Machine w ash cold w ith like colors. Remove promptly. Only non chlorine bleach w hen needed. Tumble dry low. Cool iron if needed. Do not dry clean



front



back

HOW TO MEASURE



CHEST WIDTH

Measure under the arm and around the fullest part of the chest w ith arms dow n, keeping tape horizontal.

SIZE CHART

	XS	S	M	L	XL	2XL	3XL	4XL
Chest	32-34	35-37	38-40	41-43	44-46	47-49	50-53	54-57

COLOR INFORMATION



Aluminum Grey
PMS COOL GRAY
8C



Blacktop
PMS BLACK C