

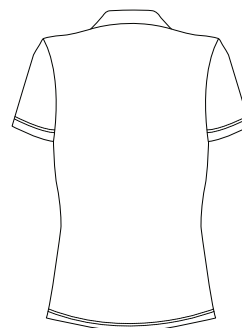


RED HOUSE

THE WINE COUNTRY LIFESTYLE



Front



Back

LADIES 100% ORGANIC COTTON PIQUE POLO

RH32


Flat knit collar with a shorter three-button placket than our men's style, grosgrain trim on the inside neck and hemmed sleeves. Red House engraved buttons and right-sleeve Red House embroidery.



Care Instructions:
Machine wash cold, inside out.
Lay flat to dry.

Finished Measurements in Inches								
Size	XS	S	M	L	XL	XXL	Plus 1X	Plus 2X
Chest	18.5	19.5	20.5	21.5	22.5	23.5	25	26
Length	24	25	26	27	28	28	29	30
Sleeve	8	8	8.5	8.5	9	9	9.5	10
Shoulder	15.5	16.5	17.5	18.5	19.5	20.5	22	22

Chest measured 1" under arm hole. Body length measured from center back neck seam to hem.
Sleeve measured from shoulder seam to hem. Shoulder width measured from arm hole to arm hole.
Sweep measured side seam to side seam.

Colors	
	Navy
	Yellow
	Rust
	Red
	Vanilla
	Black

Please Note: Colors shown are approximate and for reference only. For closest match see PMS colors, or for exact match, returnable samples and grommited samples are available.

Color Chart						
Colors	Navy	Yellow	Rust	Red	Vanilla	Black
General PMS	No Match	No Match	No Match	No Match	No Match	No Match
Textile PMS	533 C	141 C	729 C	7420 C	Warm Grey 1 C	Process Black C

Red House Embroidery Recommendations Provided by the Embroidery Trade Association

RH01/RH02 – Honeycomb Performance Pique Polo & Ladies Honeycomb Performance Pique Polo

Backing – 3 oz cut-away or tear-away

Thread: 40 weight

Soluble topping recommended.

Needle: Ball point

Notes: This garment will work well with most designs, but take care not to stretch the fabric when hooping.

This information is intended to serve as a guideline for embroiderers. SanMar is not responsible for the compromised integrity of Red House fabrics due to embroidery or decoration.