

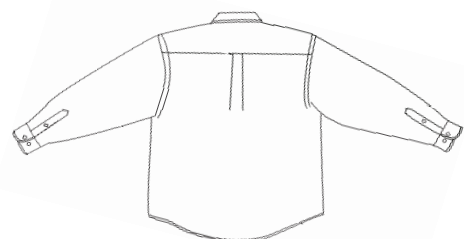


RED HOUSE

THE WINE COUNTRY LIFESTYLE



Front



Back

Non-IRON BUTTON-DOWN Box Check Shirt

RH36

Classic patterns with no need for the old-fashioned iron. 100% two-ply cotton shrugs off wrinkles, but unlike average non-iron shirts, ours are woven with 80-doubles yarn and specially treated to stay exceptionally soft. Single-needle tailoring; open collar and patch pocket. Red House engraved buttons and tonal embroidery on the right-sleeve placket. Adult Sizes XS–4XL



Care Instructions:
Machine wash warm with like colors.
Do not bleach. Tumble dry low.
Remove promptly and hang.

Finished Measurements in Inches								
Size	XS	S	M	L	XL	2XL	3XL	4XL
Width	20	21.5	23	24.5	26	27.5	29	30.5
Length	26.5	28.5	32	32.5	34	34.5	35.5	36
Sleeve	31	32.5	34.5	35.5	37	38	39	40

Chest measured 1" under arm hole. Body length measured from center back neck seam to hem.
Sleeve measured from center back neck seam to hem. Shoulder width measured from arm hole to arm hole.
Pocket measured WxH. Collar measured by circumference.

Colors	
	Light Tan/White
	Blue/White

Please Note:
Colors shown are approximate and for reference only. For closest match see PMS colors, or for exact match, returnable samples and grommited samples are available.

Color Chart		
Colors	Light Tan/White	Blue/White
Textile PMS	No Match	No Match
General PMS	7528 C	535 C