



Ladies Avery Park™ Jacket XL5082



This sleek weather-fighting jacket is the ideal companion to our City Trek™ II Jacket. Maximum Thermal Retention (MTR™) fleece lining keeps things nice and cozy, regardless of where your day takes you.

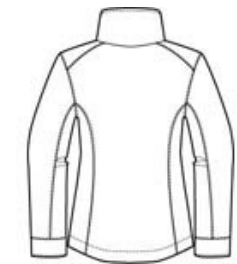
- Trail Grinder™ twill shell with 100% polyester MTR fleece body lining, 100% nylon taffeta sleeve lining
- 140 gram, 100% polyester sleeve insulation
- Contrast Columbia logo embroidered on right chest
- Open cuffs
- Zippered hand warmer pockets
- Interior security pocket
- Drop tail open hem

CARE INSTRUCTIONS

NEW Columbia® - Ladies Avery Park™ Jacket. XL5082

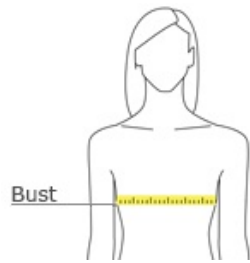


front



back

HOW TO MEASURE



BUST
With arms down at sides, measure around the upper body, under arms and around the fullest part of the bust.

SIZE CHART

	S	M	L	XL
Size	4/6	8/10	12/14	16/18
Bust	34-36	36-38	38-41	41-44

COLOR INFORMATION



Black



Winter White