



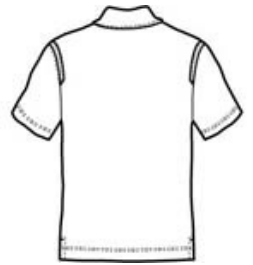
DISCONTINUED Nike Dri-FIT Shoulder Stripe Polo. 402394



Achieve superior performance in this new polo crafted with Dri-FIT moisture management technology. Distinct shoulder stripes offer visual impact. Features a self-fabric collar, three-button placket, open hem sleeves and side vents. The contrast Sw oosh design trademark is embroidered on the left sleeve. Made of 4.4-ounce, 100% polyester Dri-FIT fabric.



front



back

HOW TO MEASURE



CHEST WIDTH

Measure under the arm and around the fullest part of the chest with arms down, keeping tape horizontal.

SIZE CHART

	XS	S	M	L	XL	2XL	3XL	4XL
Chest	32-35	35 - 37 1/2	37 1/2 -41	41 - 44	44 - 48 1/2	48 1/2 - 53 1/2	53 1/2 - 58	58 - 63

COLOR INFORMATION

Please note: PMS code information is shown only when an exact match is available.

