



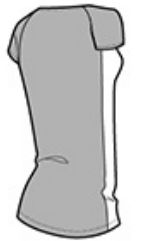
DISCONTINUED Nike Ladies Dri-FIT Stretch Woven V-Neck Top. 838960



A stretch woven front joins with a knit back for exceptional ease of movement and a sleek, high-performance look. Dri-FIT moisture management technology helps keep you dry and comfortable. Tailored for a feminine fit with a flattering v-neckline and raglan sleeves. Design details include open hem sleeves with a contrast heat transfer Sw oosh design trademark on the left sleeve. Front made of 4.7-ounce, 84/16 poly/spandex stretch w oven and back made of 4.2-ounce, 100% polyester knit Dri-FIT fabrics.

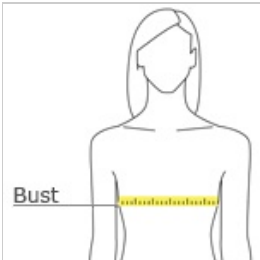


front



back

HOW TO MEASURE



BUST

Measure under the arm and around the fullest part of the bust with arms down, keeping tape horizontal.

SIZE CHART

	S	M	L	XL	2XL
Chest	1	1	1	1	1

COLOR INFORMATION

Please note: PMS code information is shown only when an exact match is available.