



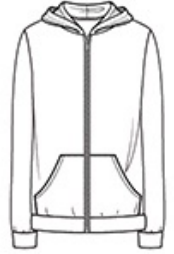
Light enough to layer or wear alone, this hoodie is the kind of staple you'll return to again and again.

- 4.13-ounce, 50/38/12 poly/cotton/rayon
- 50% polyester (6.25% recycled), 38% cotton (6.25% organic), 12% rayon
- Classic fit
- Split kangaroo pocket
- Rib hems

Eco-Jersey fabric infuses each garment with unique character. Please allow for slight color variations. Alternative Apparel reserves the right to prohibit the addition to any Alternative Apparel product any mark, name, design or logo that does not meet the high standards of the brand. Please contact your sales representative with questions. These products may not be resold without embellishment.

CARE INSTRUCTIONS

Machine wash cold. Tumble dry low.



front



back

HOW TO MEASURE



CHEST

Measure under the arm and around the fullest part of the chest with arms down, keeping tape horizontal.

SIZE CHART

| | S | M | L | XL | 2XL | 3XL |
|-------|-------|-------|-------|-------|-------|-------|
| Chest | 35-37 | 38-40 | 41-43 | 44-46 | 47-48 | 49-50 |

COLOR INFORMATION



Eco Black
PMS NTR BLACK
C



Eco Grey
PMS 424C



Eco Pacific Blue
PMS 7684C



Eco True Black
PMS NTR BLACK
C



Eco True Navy
PMS 2379C