



# District® Women's Perfect Tri® Muscle Tank DT153



A relaxed body and low -cut armholes give this tank a modern twist on a throw back silhouette.

- 4.5-ounce, 50/25/25 poly/combed ring spun cotton/rayon, 32 singles
- 1x1 rib knit neck
- Double-needle stitching at armholes
- Side seamed
- Tear-away label

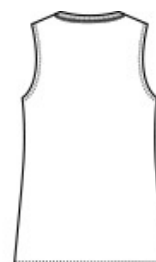
*Due to the nature of cotton/polyester blends in dark and neon colors, special care must be taken throughout the decoration process when heat is applied for curing. Please consult with your decorator or material supplier.*

## CARE INSTRUCTIONS

Machine Wash Cold With Like Colors. Do Not Bleach. Tumble Dry Low. Cool Iron If Necessary.

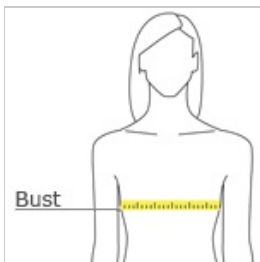


front



back

## HOW TO MEASURE



### BUST

Measure under the arm and around the fullest part of the bust with arms down, keeping tape horizontal.

## SIZE CHART

	XS	S	M	L	XL	XXL	3XL	4XL
Size	2	4/6	8/10	12/14	16/18	20/22	24/26	28/30
Bust	32-34	35-36	37-38	39-41	42-44	45-47	48-51	52-55

## COLOR INFORMATION



Black  
PMS BLACK C



Flint Blue Heather  
PMS 4136C



Heathered  
Charcoal  
PMS 7540C



Heathered Russet  
PMS 7609C



Ochre Yellow  
Heather  
PMS 7771C



White  
PMS NO MATCH



Wisteria Heather  
PMS NO MATCH