



Eddie Bauer® Ladies Stretch Soft Shell Jacket EB545



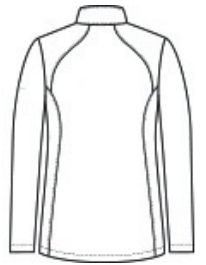
With 4-way stretch, a subtle ripstop texture and weather protection-these are the next-generation soft shell jackets to wear on the trails or around town. Made for mobility, these 3K/3K waterproof, breathable jackets with a durable water-repellent (DWR) finish feature an interior storm flap and chin guard. Streamlined and refined elements include an invisible zippered chest pocket, reverse coil center front zipper with an Eddie Bauer logo zipper pull. Adjustable locking draw cord hem and reverse coil zippered hand pockets. Longer length, 2-way center front zipper. Embroidered Eddie Bauer logo on left shoulder. Made of 90/10 polyester/spandex bonded to a waterproof film insert and a 100% polyester fleece lining.

CARE INSTRUCTIONS

Machine Wash Cold With Like Colors. Do Not Use Fabric Softener. Do Not Bleach. Tumble Dry Low. Cool Iron. Do Not Dry Clean.



front



back

HOW TO MEASURE



BUST

Measure under the arm and around the fullest part of the bust with arms down, keeping tape horizontal.

SIZE CHART

	XS	S	M	L	XL	2XL	3XL	4XL
Size	2	4/6	8/10	12/14	16/18	20	24/26	28/30
Bust	32-33	34-35	36-37	38-40	41-43	44-46	47-49	50-52

COLOR INFORMATION



Deep Black
PMS BLACK C



Iron Gate
PMS 7540C



River Blue Navy
PMS 533C