

Eddie Bauer

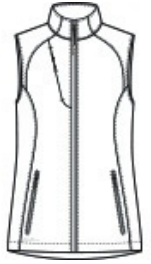
Eddie Bauer® Ladies Stretch Soft Shell Vest EB547



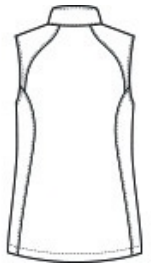
These fleece-lined vests offer next-level mobility and performance thanks to 3K/3K waterproof, breathable fabric with 4-way stretch and a durable water-repellent (DWR) finish. They feature an interior storm flap and chin guard. Streamlined and refined elements include an invisible zippered chest pocket, reverse coil center front zipper with an Eddie Bauer logo zipper pull. Reverse coil zippered hand pockets. Embroidered Eddie Bauer logo on right hem. Longer length. Made of 90/10 polyester/spandex bonded to a waterproof film insert and a 100% polyester fleece lining.

CARE INSTRUCTIONS

Machine Wash Cold With Like Colors. Do Not Use Fabric Softener. Do Not Bleach. Tumble Dry Low. Cool Iron. Do Not Dry Clean.



front



back

HOW TO MEASURE



BUST

Measure under the arm and around the fullest part of the bust with arms down, keeping tape horizontal.

SIZE CHART

	XS	S	M	L	XL	2XL	3XL	4XL
Size	2	4/6	8/10	12/14	16/18	20/22	24/26	28/30
Bust	32-33	34-35	36-37	38-40	41-43	44-46	47-49	50-52

COLOR INFORMATION



Deep Black
PMS BLACK C



Iron Gate
PMS 7540C



River Blue Navy
PMS 533C