



Ultra-soft meets cozy warmth in these layerable sherpa fleece pullovers. Ideal for cooler days, they are comfortable, versatile and designed to fend off the chill in style.

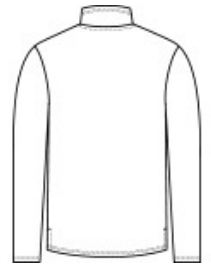
- 6.8-ounce, 100% polyester sherpa fleece
- Reverse coil zipper
- Dyed-to-match neck tape, zipper and zipper pull
- Open cuffs and hem

**CARE INSTRUCTIONS**

Machine wash cold separately. Do not bleach. Tumble dry low. Remove promptly. Cool iron if necessary.



front



back

**HOW TO MEASURE**



**CHEST WIDTH**

Measure under the arm and around the fullest part of the chest with arms down, keeping tape horizontal.

**SIZE CHART**

	XS	S	M	L	XL	2XL	3XL	4XL
Chest	32-34	35-37	38-40	41-43	44-46	47-49	50-53	54-57

**COLOR INFORMATION**



Black  
PMS NTR BLACK  
C

Charcoal

Grey Heather

Oatmeal Heather