

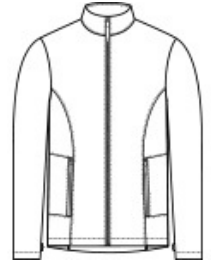


A smooth face, brushed back and striated pattern come together to make this warm fleece jacket undeniably on-trend.

- Can be zipped in and secured by snap attachments inside an outer Collective layer
- 6.3-ounce, 100% polyester fleece
- Slightly longer length
- Molded center front zipper
- Front reverse-coil zippered pockets
- Open cuffs and hem

**CARE INSTRUCTIONS**

Machine wash warm. Only non-chlorine bleach, when needed. Tumble dry normal cycle. Cool iron, if necessary or dry clean.



front



back

**HOW TO MEASURE**







**CHEST WIDTH**

Measure under the arm and around the fullest part of the chest with arms down, keeping tape horizontal.

**SIZE CHART**

	XS	S	M	L	XL	2XL	3XL	4XL
Chest	32-34	35-37	38-40	41-43	44-46	47-49	50-53	54-57

**COLOR INFORMATION**

			
Deep Black Heather PMS BLACK C	Deep Olive Heather PMS 7771C	River Blue Navy Heather PMS 533C	Sterling Grey Heather PMS 425C