



We reinvented our classic rain jacket with this critically seam-sealed slicker that features water resistance, a soft hand feel and reflective details for enhanced visibility and a modern look.

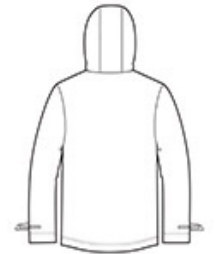
- 100% PU-coated polyester
- 100% polyester mesh-lined body and hood
- 100% polyester-lined sleeves
- 1500MM fabric waterproof rating
- Attached hood with adjustable locking drawcord
- Molded zipper
- Grommets for breathability under arms
- Adjustable self-fabric tab cuffs with hook and loop closures and reflective detail
- Front zippered pockets with reflective detail
- Port Pocket™ for easy embroidery access
- Open hem with adjustable locking drawcord

CARE INSTRUCTIONS

Machine wash cold. Only non-chlorine bleach when needed. Line dry. Do not iron. Do not dry clean.



front



back

HOW TO MEASURE




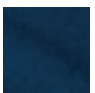


CHEST WIDTH

Measure under the arm and around the fullest part of the chest with arms down, keeping tape horizontal.

SIZE CHART

	XS	S	M	L	XL	2XL	3XL	4XL
Chest	32-34	35-37	38-40	41-43	44-46	47-49	50-53	54-57

COLOR INFORMATION

			
Black PMS NTR BLACK	Navy PMS 532C	Northern Grey PMS 424C	Slicker Yellow PMS 1235C