

**SPORT-TEK**

# Sport-Tek® Embossed Hooded Wind Jacket. JST53

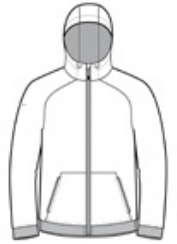


This wind-resistant, water-repellent jacket delivers powerful performance and features an embossed geometric pattern and reflective details for an unrivaled look.

- 100% polyester embossed woven body
- 100% polyester mesh body and hood lining
- 100% polyester woven sleeve lining
- Three-panel hood with drawcord and toggles
- Tag-free label
- Raglan sleeves
- Reverse coil zipper
- Reflective details on right sleeve and lower back
- Port Pocket™ for easy embroidery access
- Elastic trim at cuffs and hem
- Front zippered pockets

### CARE INSTRUCTIONS

Machine wash cold gentle cycle with like colors. Use mild detergent. Remove immediately. Do not allow to lay on itself when wet. Do not bleach. Tumble dry low. Cool iron if needed. Do not dry clean



front



back

### HOW TO MEASURE



#### CHEST WIDTH

Measure under the arm and around the fullest part of the chest with arms down, keeping tape horizontal.

### SIZE CHART

	XS	S	M	L	XL	2XL	3XL	4XL
Chest	32-34	35-37	38-40	41-43	44-46	47-49	50-53	54-57

### COLOR INFORMATION



Black/ Black  
PMS NTR BLACK  
C



Black/ True Red  
PMS 200C



Graphite/ Black  
PMS 432C



True Navy/ True  
Navy  
PMS 533C



True Royal/ Black  
PMS 7687C