

**SPORT-TEK®**

## Sport-Tek® Packable Anorak. JST66

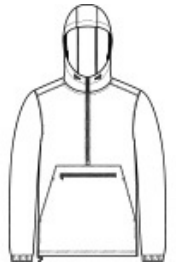


This weather-fighting essential packs into its own front pocket-making it easy to throw it into a gym duffel.

- 100% polyester shell
- 100% polyester jersey lining with mesh insets at gussets for added breathability
- Three-panel hood with draw cord and toggles
- Tag-free label
- Extended reverse coil center front zipper for easy on/off
- Elastic at cuffs
- Packs into front zippered pocket
- Front pouch pocket
- Draw cord hem with toggles

### CARE INSTRUCTIONS

Machine wash cold. Gentle cycle with like colors. Use mild detergent and remove immediately. Do not allow to lay on itself when wet. Do not bleach. Tumble dry low. Cool iron, if needed.



front



back

### HOW TO MEASURE



#### CHEST WIDTH

Measure under the arm and around the fullest part of the chest with arms down, keeping tape horizontal.

### SIZE CHART

	XS	S	M	L	XL	2XL	3XL	4XL
Chest	32-34	35-37	38-40	41-43	44-46	47-49	50-53	54-57

### COLOR INFORMATION

Please note: PMS code information is shown only when an exact match is available.



Black  
PMS BLACK C



Forest Green  
PMS 553C



Graphite  
PMS 7540C



Maroon  
PMS 504C



Purple  
PMS 7672C



True Navy  
PMS 533C



True Red  
PMS 200C



True Royal  
PMS 7687C



White