

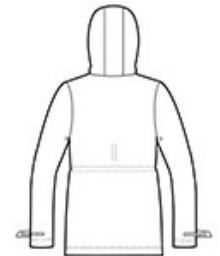


We reinvented our classic rain jacket with this critically seam-sealed slicker that features water resistance, a soft hand feel and reflective details for enhanced visibility and a modern look.

- 100% PU-coated polyester
- 100% polyester mesh-lined body and hood
- 100% polyester-lined sleeves
- 1500MM fabric waterproof rating
- Attached hood with adjustable locking drawcord
- Molded zipper
- Grommets for breathability under arms
- Longer length with adjustable locking drawcord waist
- Adjustable self-fabric tab cuffs with hook and loop closures and reflective detail
- Front zippered pockets with reflective detail
- Port Pocket™ for easy embroidery access
- Open hem with adjustable locking drawcord
- Reflective details at back



front

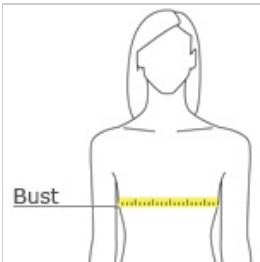


back

**CARE INSTRUCTIONS**

Machine wash cold. Only non-chlorine bleach when needed. Line dry. Do not iron. Do not dry clean.

**HOW TO MEASURE**



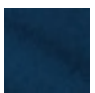





**BUST**  
Measure under the arm and around the fullest part of the bust with arms down, keeping tape horizontal.

**SIZE CHART**

	XS	S	M	L	XL	XXL	3XL	4XL
Size	2	4/6	8/10	12/14	16/18	20/22	24/26	28/30
Bust	32-34	35-36	37-38	39-41	42-44	45-47	48-51	52-55

**COLOR INFORMATION**

					
Black PMS NTR BLACK	Isla Blue PMS 631C	Navy PMS 532C	Northern Grey PMS 424C	Pink Horizon PMS 7635C	Slicker Yellow PMS 1235C