

PORT AUTHORITY

Port Authority[®] Ladies Collective Outer Shell Jacket. L900

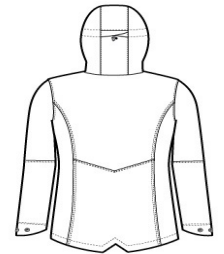


This sophisticated, breathable and waterproof shell is fully seam-sealed to fight the elements with a water-shedding durable water-repellent (DWR) finish.

- Weatherproof outer layer into which other Collective styles can be zipped and secured by snap attachments
- 100% polyester shell with DWR finish
- 100% polyester printed lining
- 8000MM fabric waterproof rating
- 3000G/M2 fabric breathability rating
- Slightly longer length
- Attached, adjustable hood with locking draw cord
- Reverse coil zippers
- Interior chest pocket
- Full-length interior storm flap
- Full-length exterior storm flap with snap closure
- Adjustable snap cuffs
- Zippered hand pockets
- Hidden front pockets with flaps over second pockets and snap closures
- Port Pocket™ for decoration access



front

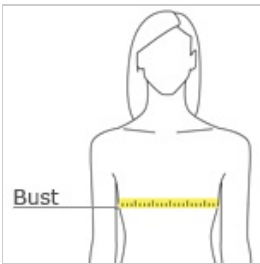


back

CARE INSTRUCTIONS

Machine wash cold with like colors; do not use fabric softener; tumble dry low; remove promptly; only non-chlorine bleach when needed; cool iron if necessary; do not dry clean.

HOW TO MEASURE



BUST

Measure under the arm and around the fullest part of the bust with arms down, keeping tape horizontal.

SIZE CHART

	XS	S	M	L	XL	XXL	3XL	4XL
Size	2	4/6	8/10	12/14	16/18	20/22	24/26	28/30
Bust	32-34	35-36	37-38	39-41	42-44	45-47	48-51	52-55

COLOR INFORMATION



Deep Black
PMS BLACK C



Graphite
PMS 7540C



Red Pepper
PMS 186C



River Blue Navy
PMS 533C